

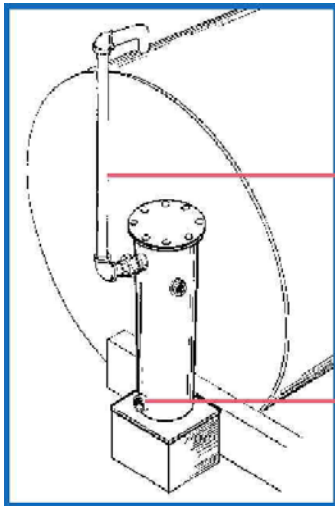
## STORAGE TANK VENT DRIERS

Use a DRIERITE Vent Drier to prevent condensation or absorption of water vapor by a material in a storage tank. All DRIERITE Vent Driers have a sight glass window with Indicating DRIERITE to tell you when the drier is exhausted.



### Applications

- Guards sensitive materials against moisture
- Protects tanks, pumps and pipelines from corrosion by condensed water vapor
- Prevents biological growth by keeping out water
- Prevents contamination of valuable liquids by corrosive sludge
- Dries air to -100° F dewpoint or 2 ppm by weight

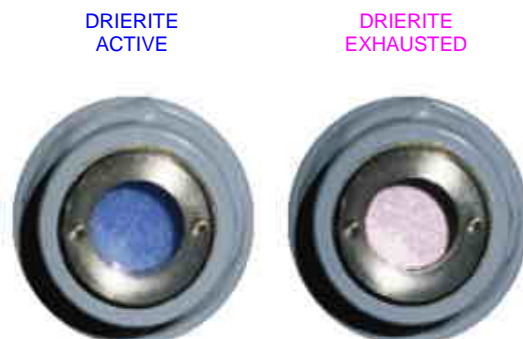


Condensation or absorption of water vapor by a material in a storage vessel can be prevented by the installation of one of these drying columns in the vent piping. When the material in a storage vessel is removed, the moisture laden air replacing the material is completely dried by the desiccant column in the vent line. Breathing through the vent line occurs daily from changes in atmospheric pressure and temperature. These DRIERITE units will prevent contamination from this source. These driers will protect storage vessels up to 400,000 gallons. The drying units will produce dry air (-100° F dewpoint) for flow rates up to 1200 gallons per minute (160 cfm). The moisture indicator eliminates guesswork; it tells you when the DRIERITE is exhausted. The glass window has a few ounces of [Indicating DRIERITE](#) behind it. The Indicating DRIERITE turns from blue to pink when the drier is exhausted. The drier contains the highly efficient Du-Cal DRIERITE. DRIERITE Storage Tank Vent Driers are efficient and economical to operate.

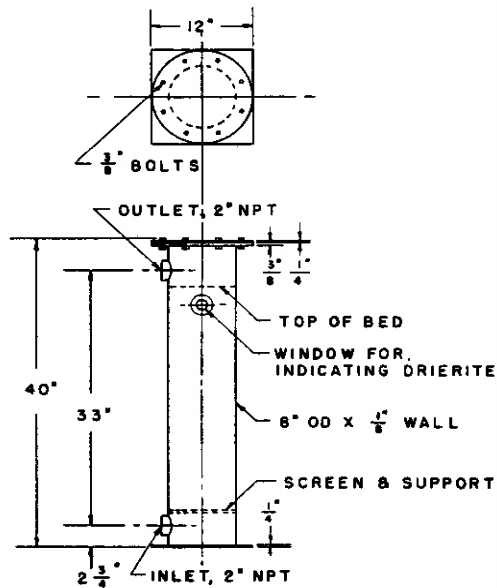
### Assembly

Fill the DRIERITE® Vent Drier to just above the sight glass window with 4 mesh Du-Cal DRIERITE®. Then hollow out a small pocket behind the window and place a few ounces of 4 mesh [Indicating DRIERITE](#)® against the window. Quickly fill the tower with Du-Cal DRIERITE® to a point 1 inch below the top outlet connection.

The upper connection of the drier is the outlet on standard driers and is connected to the storage tank through a vent line using a union or a flange.

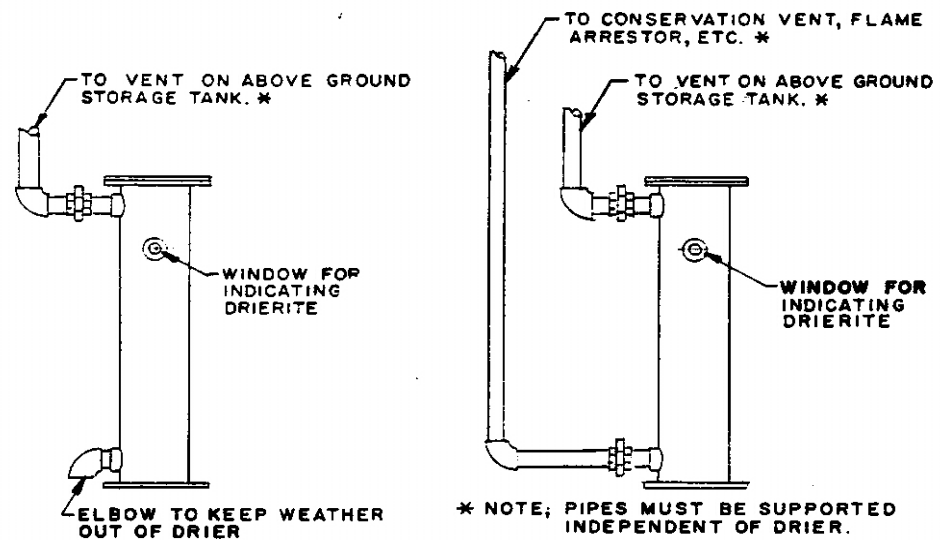


# Double Wall Vent Drier



MODEL 105 STORAGE TANK VENT DRIER

Technical Drawing



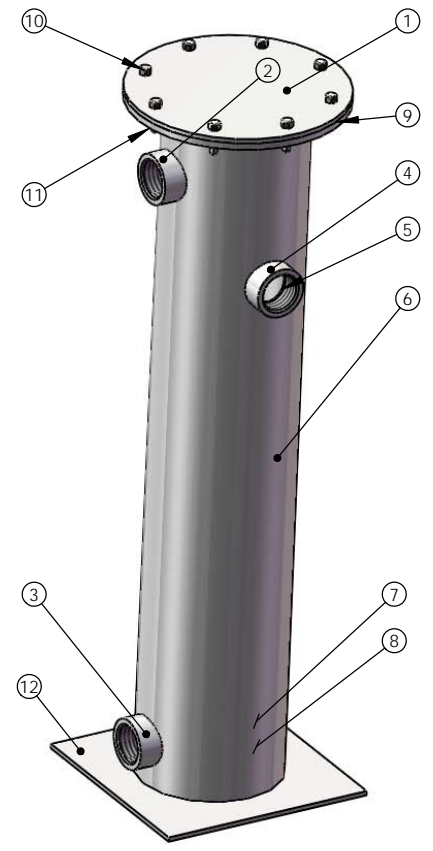
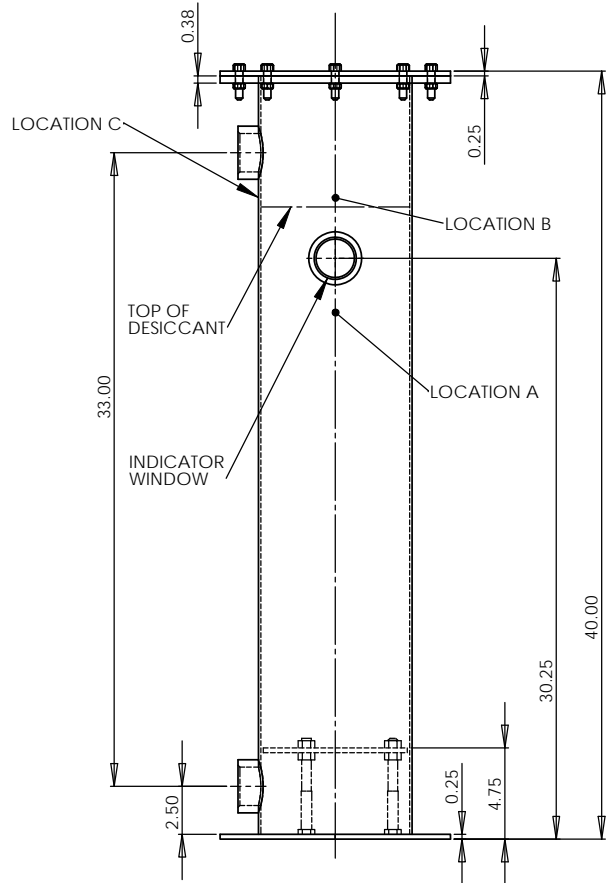
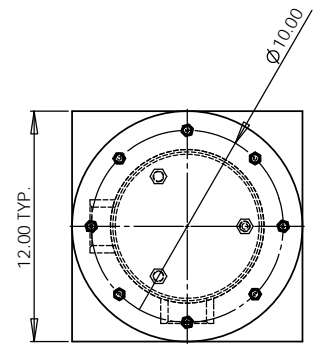
STANDARD MODEL VENT DRIERS

Installation Drawing

DRIERITE  
Phone: 937.376.2927  
[www.DRIERITE.com](http://www.DRIERITE.com)

# NOTES

- DESICCANT CAPACITY 50 LBS.  
DUCAL DRIERITE STOCK # 41050  
1/4 LB INDICATING DRIERITE STOCK # 21001
- MAX WORKING PRESSURE: 10 PSI



- TOP COVER: 1/4" SHEET; MILD STEEL
- 2" NPT OUTLET COUPLING (PURCHASE MODIFY)
- 2" NPT INLET COUPLING (PURCHASE MODIFY)
- 2" NPT COUPLING (PURCHASE MODIFY)
- 2" NPT GLASS SIGHT WINDOW (USE TEFLON SEALANT)
- TOWER: 8" OD ROLLED SHEET X .125" THICK  
Ø8.5" MESH 304SS SCREEN (ATTACHED TO GRATE WITH EIGHT 3" X .032" SS WIRES)
- STEEL GRATE AND SUPPORT LEGS
- Ø9.75" NON-ASBESTOS COMPOSITION GASKET
- (8X) 3/8-16 X 1.5" GRADE 5 BOLTS ZINC PLATED
- (8X) 3/8-16 GRADE 5 NUTS ZINC PLATED
- BOTTOM

**PROPRIETARY AND CONFIDENTIAL**  
THE INFORMATION CONTAINED IN THIS DRAWING IS THE SOLE PROPERTY OF W.A. HAMMOND DRIERITE CO. ANY REPRODUCTION IN PART OR AS A WHOLE WITHOUT THE WRITTEN PERMISSION OF W.A. HAMMOND DRIERITE CO. IS PROHIBITED.

		UNLESS OTHERWISE SPECIFIED:		NAME	DATE	<b>W.A. HAMMOND DRIERITE CO.</b> P.O. Box 460 Xenia, OH 45385... Phone (937) 376-2927 Fax (937) 376-1977 www.drierite.com e-mailto:drierite@aol.com	
		DIMENSIONS ARE IN INCHES		DRAWN	CZG		11-16-07
		TOLERANCES:		CHECKED	X		X
		FRACTIONAL ±		ENG APPR	X		X
		ANGULAR MATCH ± BEND ±					
		TWO PLACE DECIMAL ±		MFG APPR	X	X	
		THREE PLACE DECIMAL ±		D.A.	X	X	
		INTERPRET GEOMETRIC TOLERANCING PER:		COMMENTS:		TITLE:	
		MATERIAL: ALL PARTS MILD STEEL UNLESS NOTED				STORAGE TANK VENT DRIER MODEL 105	
		FINISH: ENAMEL GREY				SIZE DWG. NO. REV	
		APPLICATION: DO NOT SCALE DRAWING				C DRI-105-ASM -	
						SCALE: 1:5 SHEET 1 OF 1	